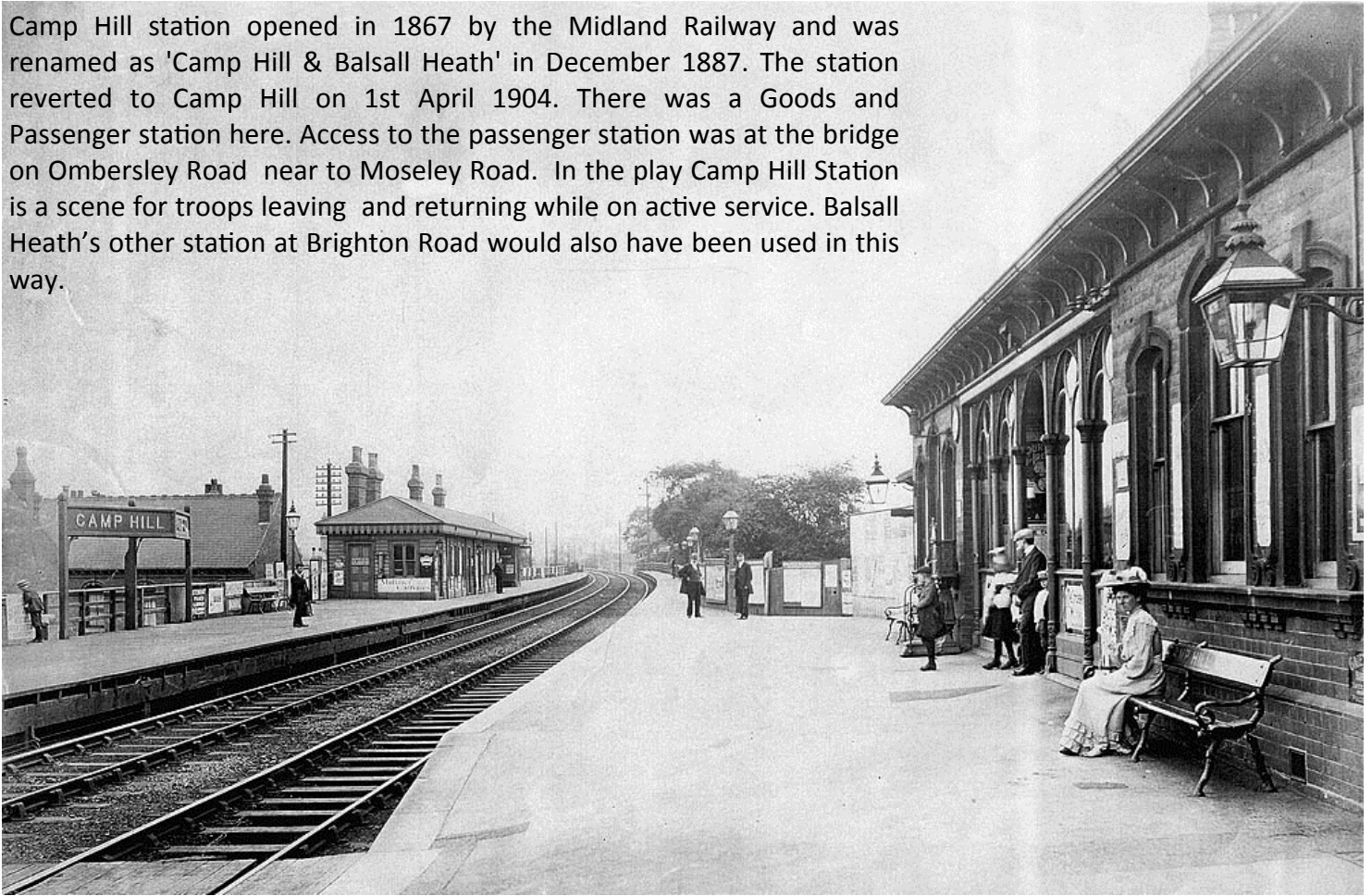


Camp Hill station opened in 1867 by the Midland Railway and was renamed as 'Camp Hill & Balsall Heath' in December 1887. The station reverted to Camp Hill on 1st April 1904. There was a Goods and Passenger station here. Access to the passenger station was at the bridge on Ombersley Road near to Moseley Road. In the play Camp Hill Station is a scene for troops leaving and returning while on active service. Balsall Heath's other station at Brighton Road would also have been used in this way.



WHEN THE LAMPS WENT OUT